



## ISS EDUrecruit

**ISS EDUrecruit** is the revolutionary, smart recruiting experience for international education where you see and share *what really matters*. See where ISS EDUrecruit can take you.

### Optimized for Ease and Results

Enjoy unlimited access to an expansive database of high-quality candidates and international schools, plus powerful tools to help you find great matches.

### Comprehensive and Agile

ISS EDUrecruit is here to meet today's needs — and to keep listening and growing for the future. Showcase your strengths in a multifaceted profile in an ever-evolving system.

### A Customizable, Meaningful Experience

ISS is committed to providing meaningful support for our schools and candidates' success, as well as a host of events and learning resources.





# ISS EDUrecruit is here

Designed to evolve with the future of international education, ISS EDUrecruit is the **new** revolutionary, smart recruiting experience where you see and share *what really matters*.

Ready to see the platform in action?  
**Watch the video here >>**



## Optimized for Ease and Results

Created to deliver high-impact, easy-to-access results for international school recruiters and job-seeking candidates, ISS EDUrecruit helps schools and candidates efficiently and effectively find incredible matches.

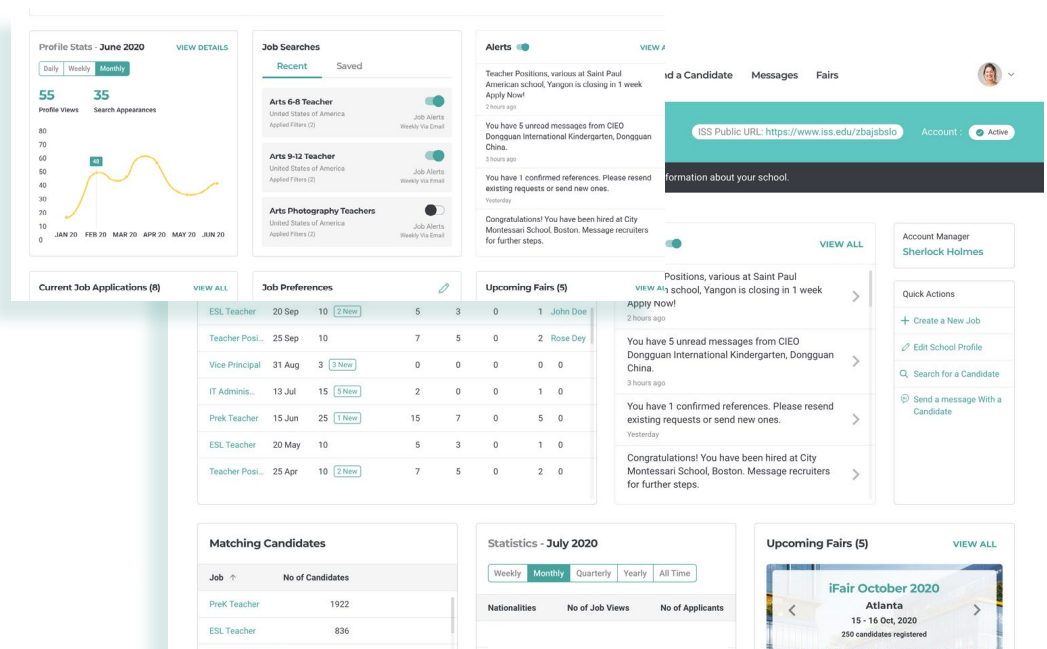
### At-a-Glance, Intuitive Dashboards

The new ISS EDUrecruit dashboards help both recruiters and candidates to get key information quickly, with less clicking, fewer screens to navigate, and maximized efficiency.

### Full-Service Application Management

Both candidates and recruiters can customize notifications, review activity meters to see how postings or profiles are performing, and use even more tools that put them in control of the recruitment journey.

Candidates can tailor and save specific job searches. Recruiters can allow candidates to initiate chats, plus share information among recruiting team members for better coordination.



School and candidate dashboard statistics

Quick Search functionality and teaching-partner details

### More Focused Search Capabilities

Powerful search tools deliver relevant results from our expansive database, optimized based on the positions current candidates are actively seeking.

### Proprietary Teaching-Partner Logic

Our teaching-partner logic is included and revamped. Recruiters can directly see which candidates are connected to fill multiple positions at a school, and team members can seamlessly collaborate in their job search.





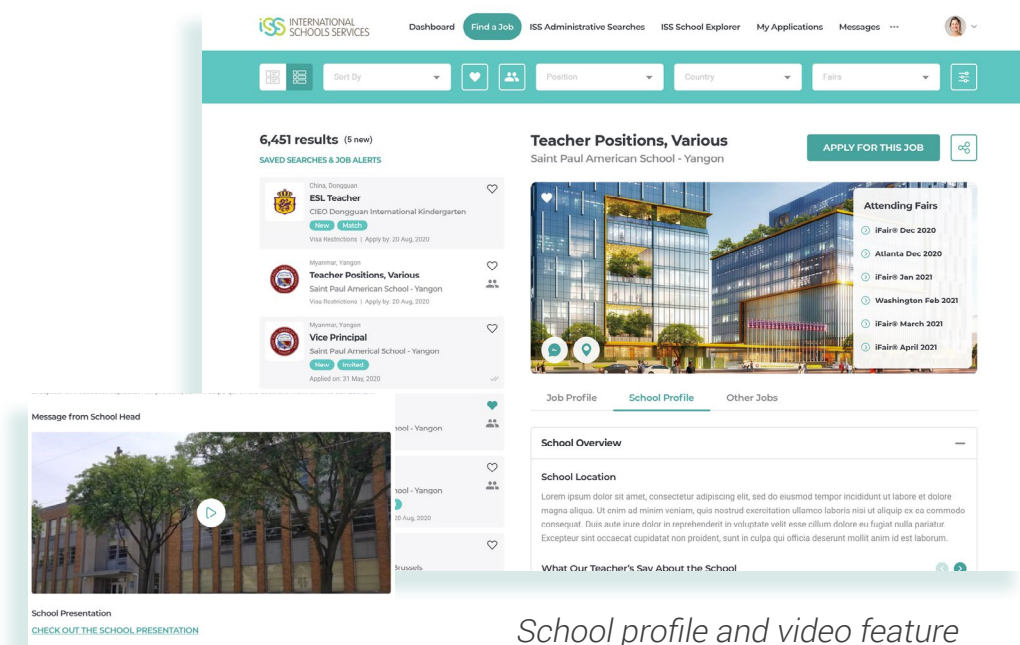
## Comprehensive and Agile

ISS EDUrecruit is designed to be an agile, ever-evolving system that reflects emerging international school sector needs and priorities. Expect features that communicate your holistic strengths as a school or candidate.

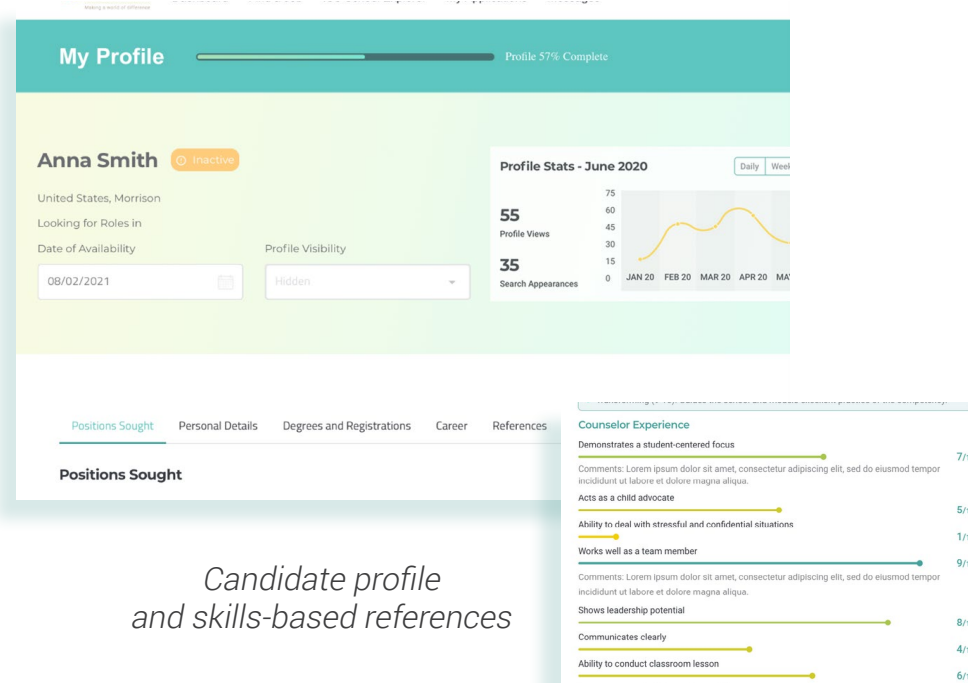
### School Profiles

Offer a broad showcase of your school and community through:

- Teaching, administrative leadership, and support (teaching assistants, substitutes) job postings, all in one place
- Detailed information about school policies, child safety measures, Diversity, Equity, Inclusion, and Justice (DEIJ) commitments, and more
- Perspectives from parents, teachers, and staff
- Leadership and school presentation videos



School profile and video feature



Candidate profile and skills-based references

### Candidate Profiles

Offer a comprehensive view of your qualifications through:

- Job-specific questions and comments
- Confidential and holistic references, easily collected from parents, peers, and supervisors. These skills-based references from a variety of perspectives give recruiters a thorough view of your strengths
- Smart searchable criteria, better demonstrating your qualifications and helping you to be easily identified for the most appropriate jobs
- Revamped teaching-partner functionality, allowing team members to share job matches with each other to assist with the application process





## A Customizable, Meaningful Experience

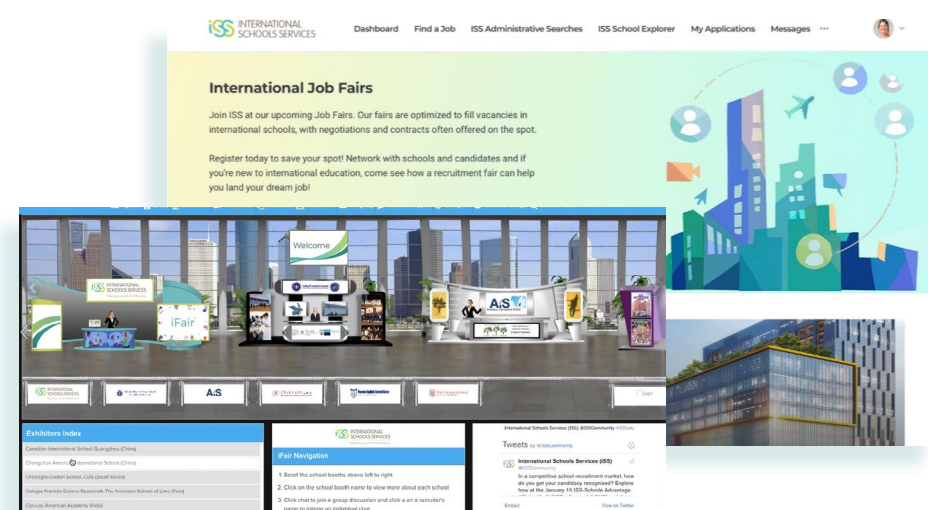
Enjoy signature ISS support dedicated to your success, as well as a host of resources and training opportunities.

### Engaging Job Fairs

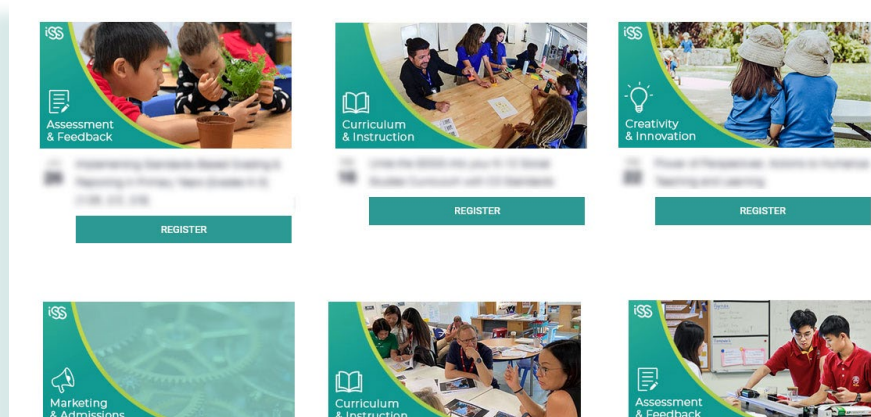
At our world-class **iFair®** events, enjoy:

- A 100% virtual event that allows you to connect regardless of location, travel restrictions, or budget.
- Network with a world of recruiters and candidates at the same place, same time.
- The most-loved features of our in-person fairs incorporated into a virtual format
- In-depth school resources, video links, a library of PD webinars, and a supportive team a click away

When safe, we also look forward to welcoming you to connect at our in-person recruitment fairs.



*The virtual iFair recruiting fair platform*



*Sample of professional learning workshop*

### Dedicated to Your Success

Our multi-disciplinary **professional development** programs are uniquely designed to provide support for entire international school faculty and staff. Take advantage of skill-building events, career enhancement sessions, and more as part of ISS EDUrecruit membership.



Learn more at  
**ISS.edu/Recruit**



**ABOUT ISS:** As a nonprofit organization, International Schools Services (ISS) works with more than 800 international schools and tens of thousands of educators each year across its suite of services, creating the largest global footprint in international education support. Since its inception in 1955, ISS has promoted innovative best practices for global education. Core services include starting and operating student-centered, future-oriented schools; recruiting world-class educators and leaders; providing cutting-edge professional learning opportunities; sourcing essential school supplies; administering school foundations; and encouraging more diverse leadership in international schools. With offices in Princeton, NJ USA and Shenzhen, China and staff located across the globe, ISS invites all to join in making a world of difference. For more information, visit [ISS.edu](https://www.iss.edu)