



ISS EDUrecruit

## ISS EDUrecruit

Created to deliver high-impact, easy-to-access results for international school recruiters and job-seeking candidates, ISS EDUrecruit is where you see and share *what really matters*.

### Expansive, Deep Connections

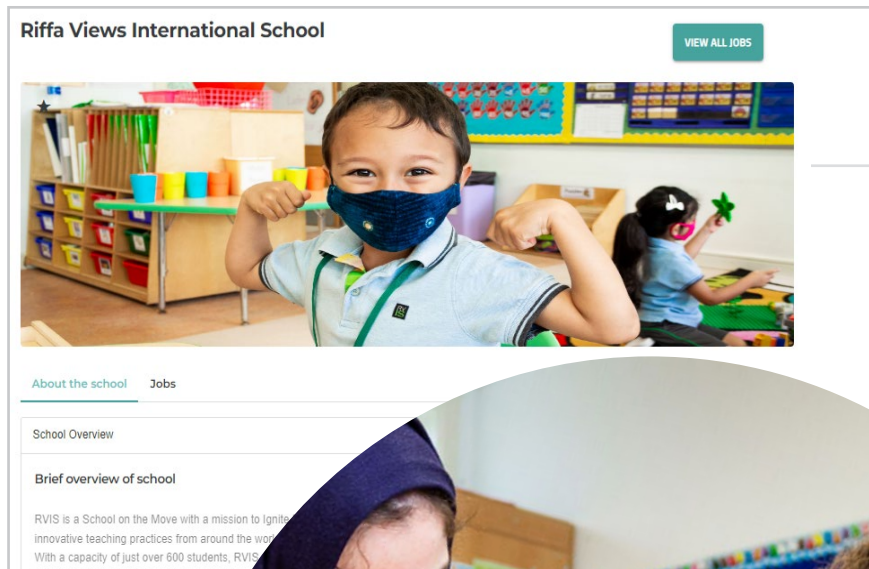
Use ISS's deep experience and vast connections to support your search, opening the door to a large database of high-quality, diverse candidates and international schools.

### Showcase and Development

Showcase your strengths in a multifaceted profile, plus continue to grow your skills through ISS world-class professional development.

### Values-Driven Commitment

ISS is committed to providing meaningful support for our schools and candidates' success, as well as hosting impactful events and learning resources.





# 4,000+ customer exchanges

for advice, tips and support

# 1,200 recruiters

from international schools are active every year in ISS EDUrecruit

# 5,000+ jobs

posted over last year in ISS EDUrecruit

# 130+ countries

represented by schools and candidates

# 100% commitment

to promoting international school recruitment best practices



## Expansive Recruitment Connections & In-depth Understanding of Schools

ISS's 65+ year experience and vast connections are at your service. As one of the most active organizations in the international education community, ISS is specially positioned to know the schools seeking new members – and to support candidates seeking their next international school opportunity.

### Comprehensive Offerings and Support

With a wide suite of services in international education, ISS maintains a comprehensive understanding of the inner workings of schools, what school communities are seeking, and what leaders and educators are facing. We've poured that experience into ISS EDUrecruit, so you'll enjoy benefits like:

- Access to a large, high-quality database of schools and candidates from diverse backgrounds
- Teaching, Professional Staff, Leadership, and Specialty postings, all in one consolidated source
- Engaging virtual and in-person recruitment events
- An incredible global ISS community support network through #ISSedu
- Expert insights into international education

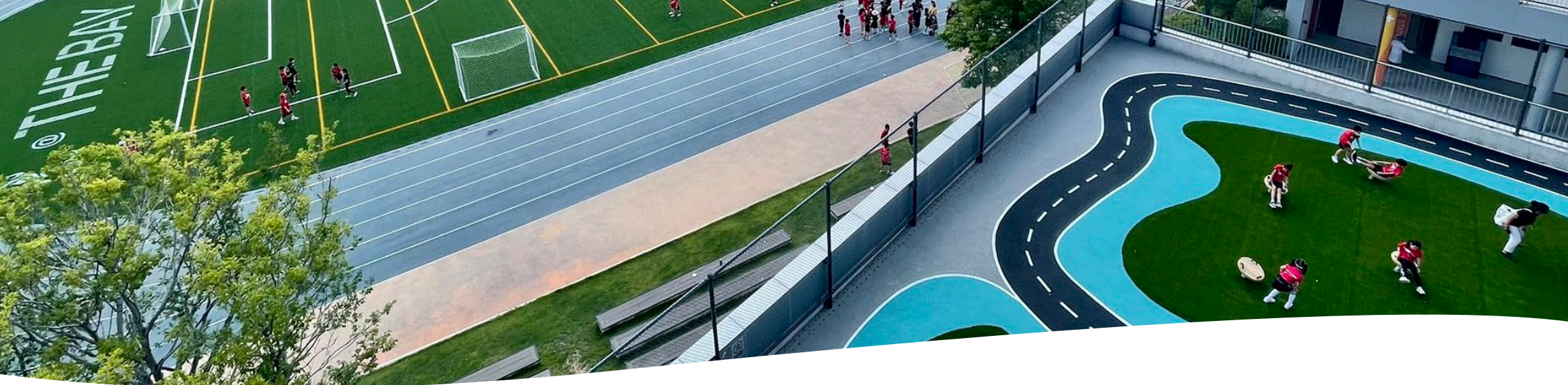
### Where You See and Share What Really Matters

ISS EDUrecruit does not permit candidate profile photos and references to native English speaker requirements, instead ensuring focus on meaningful qualifications and criteria.

Learn more about ISS's ongoing **commitments to DEIJ** here >>







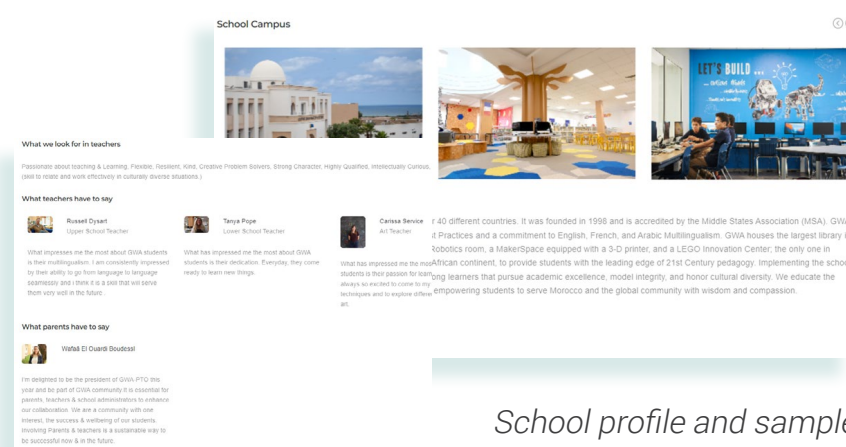
## Showcase and Development of Candidates & Schools

ISS EDUrecruit support a comprehensive view of schools and candidates, including professional profiles, videos, and more. We also offer added resources like webinars, coaching tips, and world-class professional development to help you present your strongest portfolio.

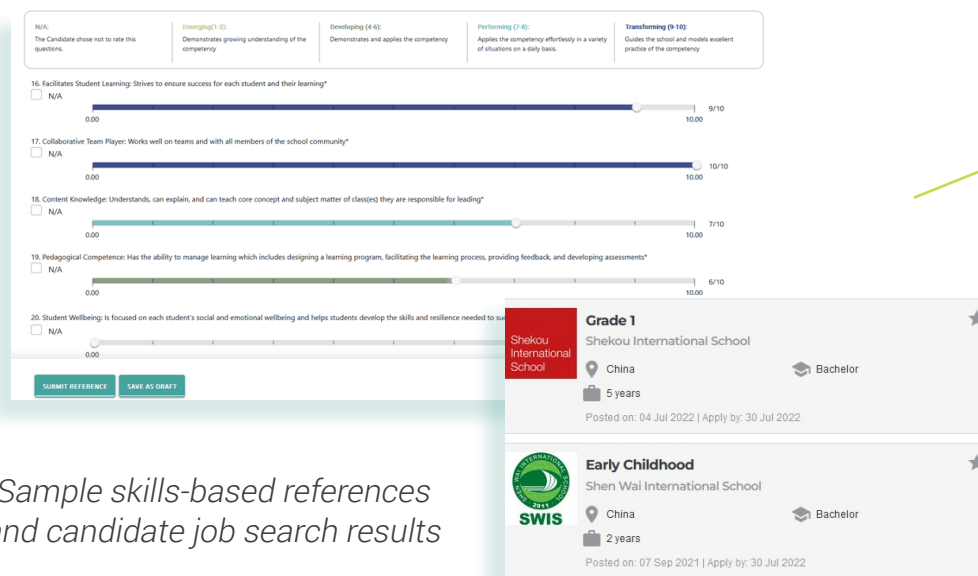
### School Profiles

In addition to spotlighting key details, ISS EDUrecruit's school profiles show candidates the offerings and community culture of a school community through:

- Leadership video messages and videos of school in action
- Reviews and perspectives from parents, teachers, and staff
- Detailed information about parent relations, policies, the school's commitment to child safety, approach to Diversity, Equity, Inclusion, and Justice (DEIJ), and more
- Up-to-date salary and benefit info for participating schools



School profile and sample community testimonials

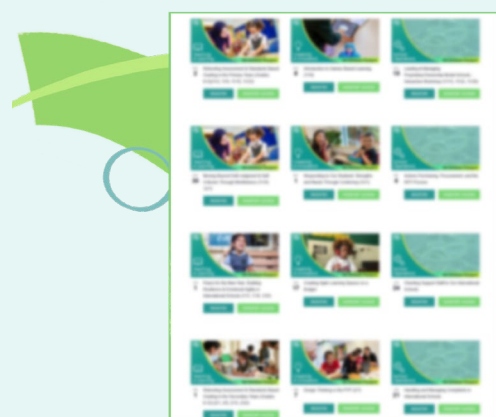


Sample skills-based references and candidate job search results

### Candidate Profiles

ISS EDUrecruit candidates can showcase qualifications, centralize records, and easily apply to multiple positions. Candidates can share a personalized look at their strengths through features like:

- Confidential and detailed skill-based references, easily collected from parents, peers, and supervisors
- Smart, searchable criteria that clearly demonstrate qualifications
- Job-specific questions and comments for candidates to share their unique point of view and voice through



### Beyond the Recruitment Journey

Develop your or your staff's skills with ISS EDUlearn professional development offerings, hosting more than 25 events in creativity and innovation, teaching and learning, school management and operations, and more. We include professional learning vouchers for ISS EDUrecruit Premium school members and Unlimited candidate members.





## Engaging International Recruitment Fairs

Whether virtual or in-person, ISS job fairs are an excellent way for recruiters and candidates to network, all with the goal of great interviews and job offers. Last season, 1,000 jobs were posted during recruiting fairs — see where this year will take you!



### Welcome Back to ISS In-Person Events!

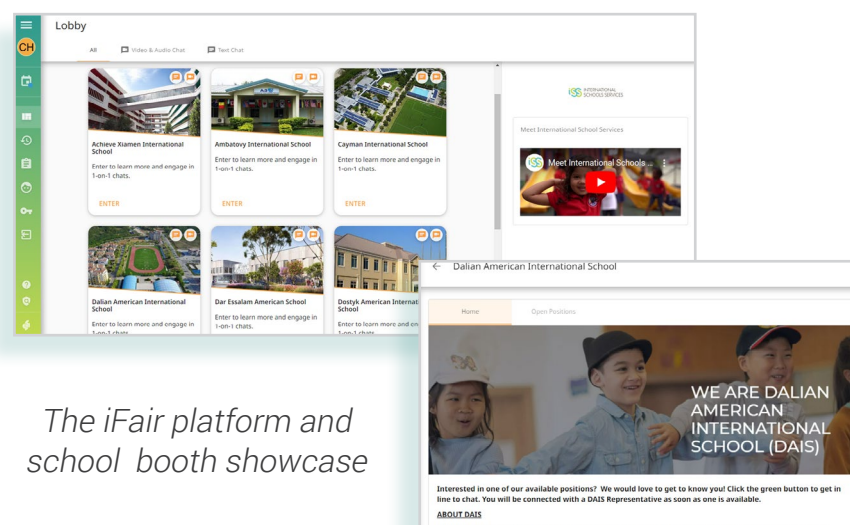
This season, we are thrilled to bring back our hallmark ISS in-person job fairs! These fast-paced job fairs are rich with connections, drawing hundreds of candidates and international school recruiters alike from all over the globe.

The two in-person fairs of this season are conveniently timed and located with **American Schools in South America (AMISA)** and **Association for the Advancement of International Education (AAIE)** events, making it easy to participate without added travel or scheduling.

### iFair®: The World at Your Fingertips

The virtual iFair's new experience emphasizes one-to-one connections. During the four-hour event, candidates and school representatives can connect directly and should expect:

- A 100% virtual, mobile-friendly event that allows you to connect regardless of location, travel restrictions, or budget
- Automated booth management so candidates and schools can optimize their time during the events by maximizing the number of one-on-one chats
- New lobby and school booth design that enables schools to highlight and candidates to see what really matters quickly
- And more!



*The iFair platform and school booth showcase*

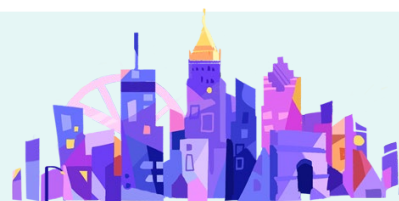
Mark your calendars for the  
2022-23 ISS job fairs

More at [ISS.edu/events](https://ISS.edu/events) >>



ISS iFair®

Nov 5, 2022 • Nov 6, 2022  
Dec 3, 2022



Atlanta, GA  
Dec 10-11, 2022



Washington, DC  
Feb 9-12, 2023





## Get involved with the mission of ISS

ISS is a founding and active member of **The International Task Force on Child Protection, The Diversity Collaborative,** and the **ISS Mary Anne Haas Women's Symposium.**

We invite you to join us in integrating best practices to meaningfully support and safeguard educators and students around the world.

Learn more at [ISS.edu](https://ISS.edu) >>

## Values-Driven Commitment

As a nonprofit organization, we care about making a world of difference. With ISS, you can expect:

- Long-standing and agile support of international education, addressing emerging challenges and new demands
- Results-driven personalized support and account management to help candidates and schools achieve their recruitment goals
- No placement fees – instead, tailored membership tiers to meet schools' individual needs
- Advanced custom support and outreach to better fill vacancies
- An organization that consistently offers support finding new assignments for displaced teachers in global hotspots, such as recently in Myanmar and Ukraine.
- A lead support and resource-provider to schools and candidates who have wrestled with the impacts of COVID-19



Making a world of difference

Learn more at [ISS.edu/Recruit](https://ISS.edu/Recruit)

[f](#) [i](#) [t](#) [in](#) #ISSedu

**ABOUT ISS:** As a nonprofit organization, International Schools Services (ISS) works with more than 800 international schools and tens of thousands of educators each year across its suite of services, creating the largest global footprint in international education support. Since its inception in 1955, ISS has promoted innovative best practices for global education. Core services include starting and operating student-centered, future-oriented schools; recruiting world-class educators and leaders; providing cutting-edge professional learning opportunities; sourcing essential school supplies; administering school foundations; and encouraging more diverse leadership in international schools. With offices in Princeton, NJ USA and Shenzhen, China and staff located across the globe, ISS invites all to join in making a world of difference. For more information, visit [ISS.edu](https://ISS.edu)